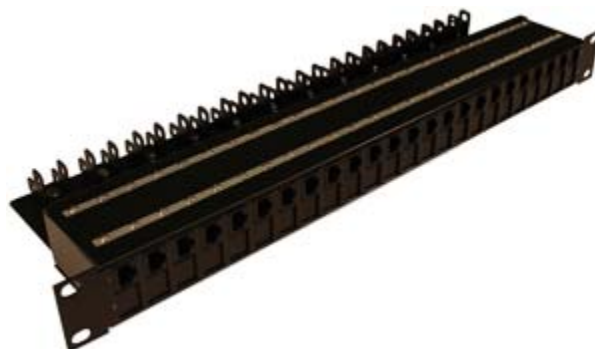


SwitchGuard Series

Rack mounted surge suppression technology for your 24 and 48 port ethernet switches and connected devices.

Installation: The SwitchGuard is a standard 1U high module that can be used for rack mounted applications.

Technology: The SwitchGuard modules employ solid state protection technology enabling it to protect sensitive electronics against severe surges.



24 port SwitchGuard (AT25055)

Application: The SwitchGuard is designed to protect 48 port ethernet switches. This unit protects 48 CAT6 PoE ports in a 1U enclosure. The modular design allows each individual module to be easily replaced. The SwitchGuard also comes in a 24-port version, in a standard 1U enclosure, with a blanking plate to cover unused ports.

Part #	Type	Maximum surge current per line [A]	Working voltage [V]	Let-through voltage [V]	Bandwidth	Connectors
AT25001-SG	10/100 BaseT	1,000	5	10	155MHz	RJ45
AT25002-SG	T-1	1,000	12	27	55MHz	RJ48C
AT25003-SG	Pass Thru	—	—	—	—	RJ45
AT25005-SG	Cat5 PoE	1,000	48	60	155MHz	RJ45
AT25006-SG	10/100/1000 BT	1,000	5	10	1000MHz	RJ45
AT25007-SG	Blanking Plate	—	—	—	—	—
AT25008-SG	RS232	1,000	12	27	1000MHz	RJ45
AT25012-SG	Cat6 PoE	1,000	48	60	1000MHz	RJ45

Model #AT25056 is an empty rack; protection modules are not included.

*Model #AT25054 is an AT25056 populated with 48 AT25012-SG modules.

Model #AT25055 is an AT25056 populated with 24 AT25012-SG modules and 24 AT25007-SG plates.



48 port SwitchGuard (AT25054)